

Some new challenges in development of the NSDI in Croatia

V. Cetl, M. Zelić, V. Poslončec Petrić



Legal status

■ Articles (84-94)

V. NATIONAL SPATIAL DATA INFRASTRUCTURE

Article 84

The National Spatial Data Infrastructure is a set of measurements, norms, specifications and services within the framework of establishing e-government aimed at enabling effective gathering, managing, exchange and usage of georeferenced spatial data specified by this Law.

Article 85

National Spatial Data Infrastructure (hereon in the text: NSDI) encompasses the establishment of the following:

- a metadata system
- spatial data sets
- spatial data services
- networking services and technology

As well as the following:

- agreements concerning spatial data exchange, access and usage
- coordination and monitoring mechanisms
- processes and procedures.

Article 86

NSDI concerns and is applied to spatial data in digital format related to the territory of the Republic of Croatia, the territorial sea and its ecologically protected or economic zones, under the jurisdiction of the following:

- state administration bodies
- regional and local self-government bodies
- public systems fully or majority owned by the Republic of Croatia
- natural person or legal entity entrusted with managing spatial data by the authorities and systems from this Article



2/19



UNIVERSITY OF ZAGREB

FACULTY OF GEODESY



STATE GEODETIC
ADMINISTRATION

2010-06-25

INSPIRE
as a framework
for cooperation



2010
INSPIRE CONFERENCE
krakow

Legal status

- The Law gives definition of NSDI services, metadata, content of metadata, spatial data and subjects that are obliged to participate in its establishment and maintenance, and what is very important gives institutional framework and defines NSDI bodies and their responsibilities
- At the time the Law was preparing, the proposal of Inspire directive was published, so all articles defining NSDI are fully in line with INSPIRE

3/19



UNIVERSITY OF ZAGREB

FACULTY OF GEODESY



STATE GEODETIC
ADMINISTRATION

2010-06-25



Partners in the NSDI (NSDI subjects)

- State administration bodies
- Regional and local self-government bodies
- Public systems fully or majority owned by the Republic of Croatia
- Natural person or legal entity entrusted with managing spatial data by the public authorities
- Natural person or legal entity who use the data and services contained in the NSDI and offer public services based on this data

Development

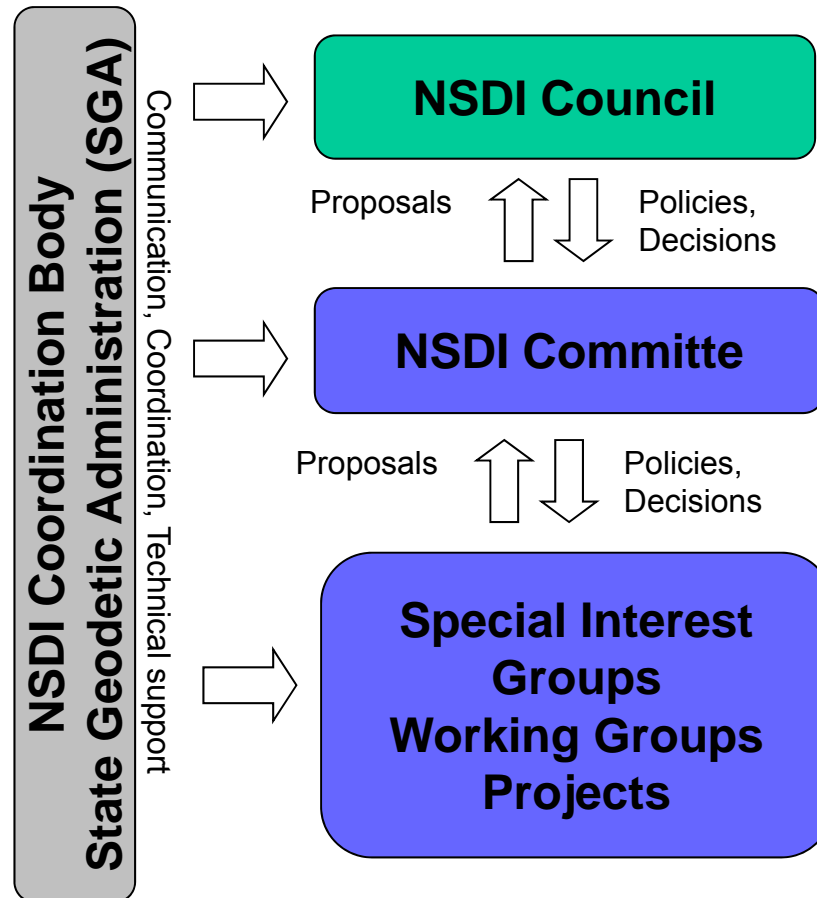
- www.geo-portal.hr (2009)

The screenshot shows the SGA.Geoportal website. At the top, there is a header with the logo of the Republic of Croatia and the State Geodetic Administration (DRŽAVNA GEODETSKA UPRAVA). The main navigation bar includes links for 'home', 'data', 'services', 'applications', 'publishing', and 'help'. The 'applications' link is highlighted. Below the navigation bar, there is a search section with 'search' and 'browse' buttons. The search section is divided into two parts: 'Where do you want to search?' and 'What are you looking for?'. The 'Where do you want to search?' section features a map of Croatia with a red box highlighting a specific area, and a text input field for 'Placename'. The 'What are you looking for?' section has dropdown menus for 'Type' (set to 'application') and 'Theme' (set to 'cadastral'), a 'Keyword' field with an asterisk, and 'Date between' options (both set to 'all'). A 'Search' button is at the bottom of this section. To the right of the search section, there are three application cards. The first card is titled 'Applications' and contains a paragraph of text. The second card is titled 'Geoportal.Mapviewer' and includes a description and two buttons: 'View details' and 'Access Application'. The third card is titled 'Preglednik katastarskih podataka' and also includes a description and two buttons: 'View details' and 'Access Application'. Each card has a small thumbnail image of the application interface.

5/19

Organisational structure

- three level



6/19

Organisational structure



- WG for the NSDI technical standards
- **WG for spatial data sharing policies**
- WG for linking the NSDI program and e-Government
- **WG for establishing a business model for the NSDI establishment**
- **WG for building the NSDI establishment capacities**

7/19

WG for spatial data sharing policies

- The mission of the WG is to coordinate and conduct the development and maintenance of an interoperable and customizable license model which is in line with the Croatian legislation and which allows NSDI subjects to unambiguously define and publish access conditions for their data and service offers
- All specifications shall be in line with INSPIRE implementing rules and guidance documents

8/19



UNIVERSITY OF ZAGREB

FACULTY OF GEODESY



STATE GEODETIC
ADMINISTRATION

2010-06-25



WG for spatial data sharing policies



- Meets on a regular basis every month since October 2008
- Consists of 11 members representing state, regional and local government and self-government bodies and private sector
- Draft proposal of general data sharing agreement is created and still under the discussion - should be completed and proceeded to the NSDI Council until the end of the year

9/19

WG for spatial data sharing policies



CHALLENGES:

- promotion of licensing through NSDI establishment. It is a parallel process, because there is no previous practice in licensing in Croatia. For the very long period of time data were sold for the fixed price without further control of use/abuse.

PROBLEMS:

- business model is not proposed yet. According to the existing laws and bylaws only state government and judiciary bodies are getting data free of charge – regional and local government/self-government have to pay a full price?!
- to what extent NSDI participants are transferring rights or power of authority to NSDI bodies? This important issue has to be agreed in the future work

10/19

WG for establishing a business model



- Spatial data and services = product
- Internet and E-commerce – motors of the market change
- Transition from the “monopolistic” into the market with a wide coverage of the supply chain
- Requests for: new business models, pricing policy, clear copyrights, standardized product specifications, metadata access, development of partnerships and strategic alliances between all the stakeholders in the spatial data arena

11/19

WG for establishing a business model



- Meets on a regular basis every month since October 2009
- Consists of 14 members representing state, regional and local government and self-government bodies and private sector
- Great interest – state administration, public and private sector, academic community ... (28 registered members)

12/19

WG for establishing a business model

Tasks:

- Create a precondition for developing a business model by networking and coordination: technology, content and business partners
- Development of a business model for establishing a sustainable partnership and business network and for the common service functioning (catalogues, data services)
- Provide the exchange of experiences, good examples and other information for the efficient implementation of the NSDI business model
- Start of the development of the NSDI business model strategy

13/19



WG for building the NSDI establishment capacities



- Two problems encountered by the Croatian GIS/NSDI communities:
 - readiness of the user community to accept the NSDI concepts and integrate them in their working processes and
 - lack of GIS/NSDI professionals to provide the necessary expertise in order to implement the NSDI establishment process

14/19



WG for building the NSDI establishment capacities



- The mission of the WG is to give the proposal for an efficient establishment of NSDI capacity building model that will enable adoption of NSDI concept in society and also its installation in work processes
- It will be necessary to establish network of GIS/NSDI professionals that will accelerate NSDI process
- WG consists of 10 members representing state, regional and local government and self-government bodies and private sector
- Meets on a regular basis every month as of October 2009

15/19

WG for building the NSDI establishment capacities

Tasks:

- To identify weaknesses in capacity building for NSDI establishment and to give best practices examples
- To build NSDI capacity building model
- To work on professional literature on NSDI
- To make proposal for NSDI subjects on different educational levels (schools, faculties etc...)
- To establish network and communication between educational institutions in Croatia and abroad

16/19



Collaboration and coordination

CIRCA - Communication & Information Resource Centre Administrator - Windows Internet Explorer

https://circa.e-hrvatska.hr/members/rc/circa/nipp/library

File Edit View Favorites Tools Help

INFORMATION LIBRARY DIRECTORY EVENTS NEWSGROUPS EMAIL SEARCH HELP

IRC:Nacionalna infrastruktura prostornih podataka NIPP

Library > Top

Abstract: Top library section Contents: 7 Subsection(s) - 0 document(s)

List items containing in Any Field

	Title+	Items	Owner	Size	Date	Version	Language
<input type="checkbox"/>	Odbor NIPP-a	0	apis@circa				
<input type="checkbox"/>	Radna skupina za izgradnju kapaciteta NIPP-a	0	apis@circa				
<input type="checkbox"/>	Radna skupina za izgradnju poslovnog modela NIPP-a	1	apis@circa				
<input type="checkbox"/>	Radna skupina za povezivanje programa NIPP-a i e-Vlade	0	apis@circa				
<input type="checkbox"/>	Radna skupina za tehničke standarde NIPP-a	0	apis@circa				
<input type="checkbox"/>	Radna skupina za zajedničko korištenje prostornih podataka NIPP-a	0	apis@circa				
<input type="checkbox"/>	Vijeće NIPP-a	0	apis@circa				

Contact Information User Preferences IG Home Page Site Map

Find in this group Go

17/19



NSDI in Croatia



Some conclusions:

- In line with INSPIRE
- Vision
- Good organizational structure
- Main challenges
 - Data sharing
 - Partnerships
 - Funding
 - Capacity building
 - ...
- NSDI is still in development (... but we all know that NSDI is an never-ending process ...)

18/19

Thank you for your attention!



vcetl@geof.hr, marjana.zelic@dgu.hr, vposlonc@geof.hr

19/19



UNIVERSITY OF ZAGREB
FACULTY OF GEODESY



STATE GEODETIC
ADMINISTRATION

2010-06-25

