

Organizational Aspects of the German Environmental Information Portal PortalU®

Stefanie Konstantinidis



Koordinierungsstelle
PortalU



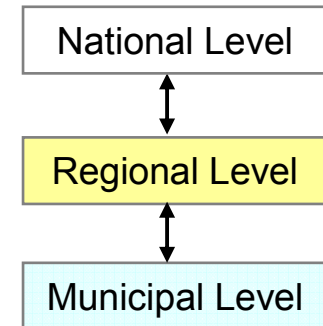
What is PortalU?

How does the project work?

Conclusion

Public environmental information in Germany

- provided by multiple institutions on different administrative levels
- heterogeneous content and format



PortalU: common access point to improve availability, access and use!

Needs for structured access

- to analyze and assess of different environmental situations
- for political decision
- for the public

- Access point to public environmental information in Germany (www.portalu.de)
- Main target groups: citizens
- Base: administrative federal state agreement

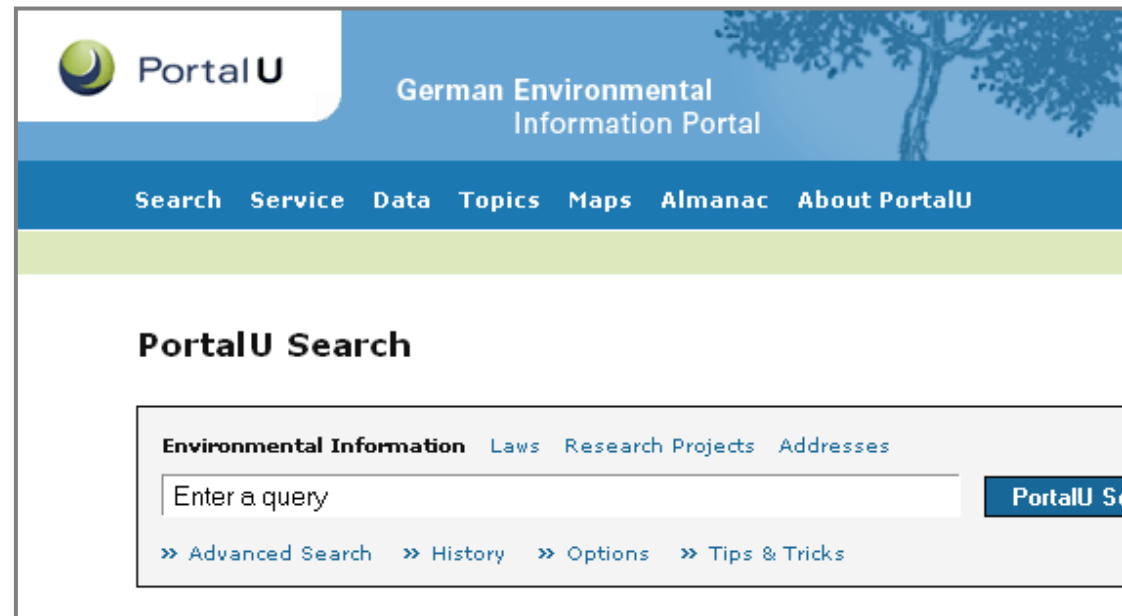
PortalU[®]-Goal

Fast, reliable overview of public environmental information




Evidence of

- environmental information due to directive on public access to environmental information (2003/4/EC)
- spatial environmental metadata due to INSPIRE (2007/2/EC)

- Environmental information:
 - Search: spatial, time related and semantically filters
- Special entry points
 - environmental topics
 - environmental monitoring data
 - current events and publications &
 - map services (WMS)
- Environmental almanac



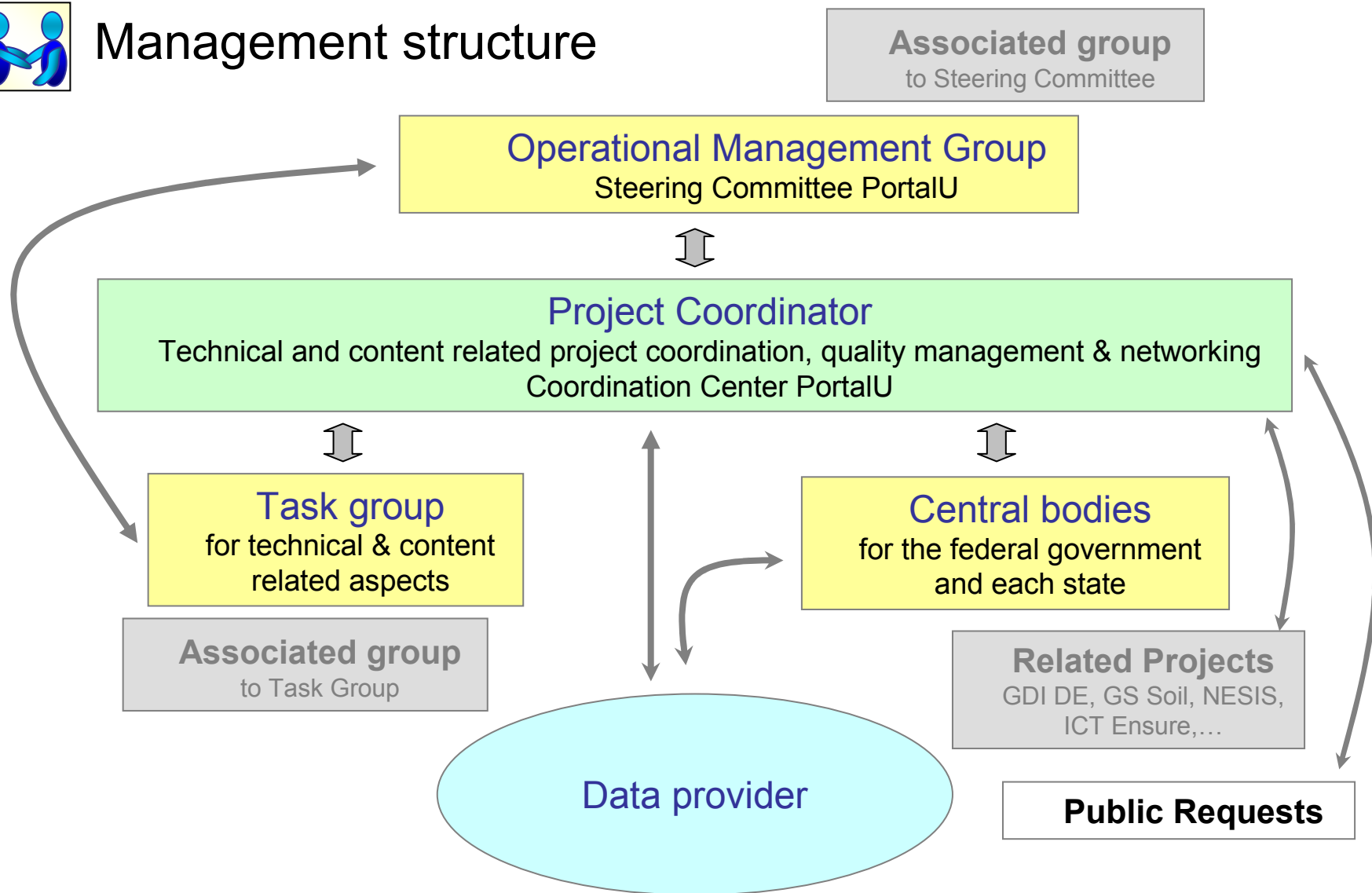
How does it work?

- Technical structure 
 - Web portal
 - Portal software
 - Open standardized interfaces
- Data structure 
 - information provider: federal government, states and municipalities
 - Web pages, RSS-Feeds, maps, catalogue entries, data base entries, ...
 - Official, quality assured environmental data
- Management structure 
 - Coordinator: Coordination Center PortalU
 - Operational Management Group: Steering Committee PortalU
 - Central body for the federal government and each state
 - Task group for technical and content related aspects
 - Associated groups

How does it work?



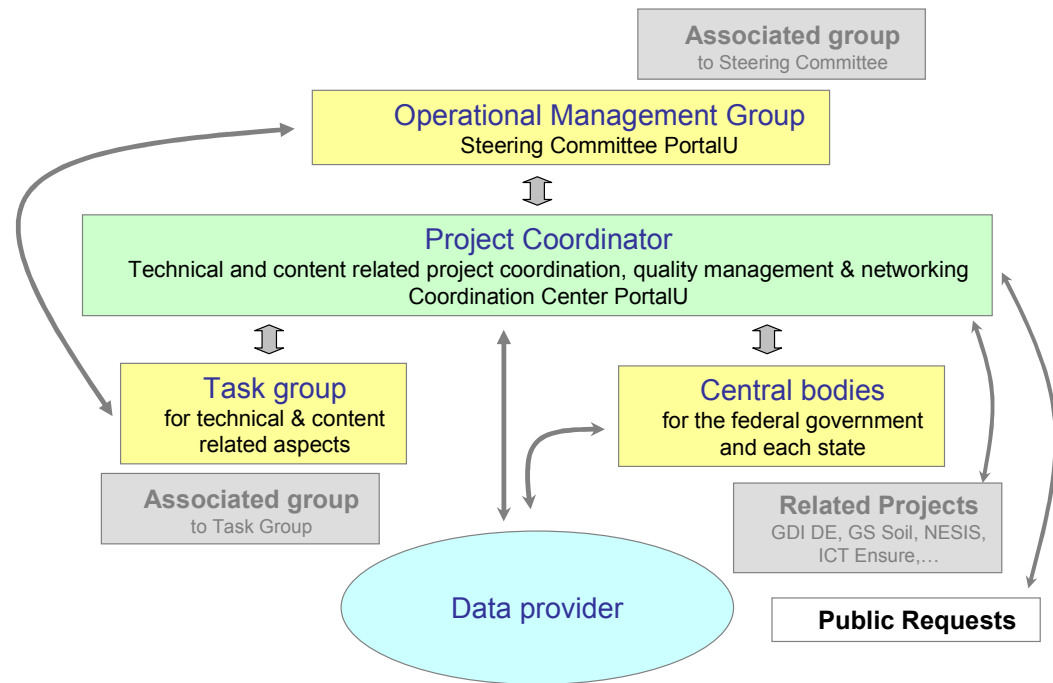
Management structure





Management structure

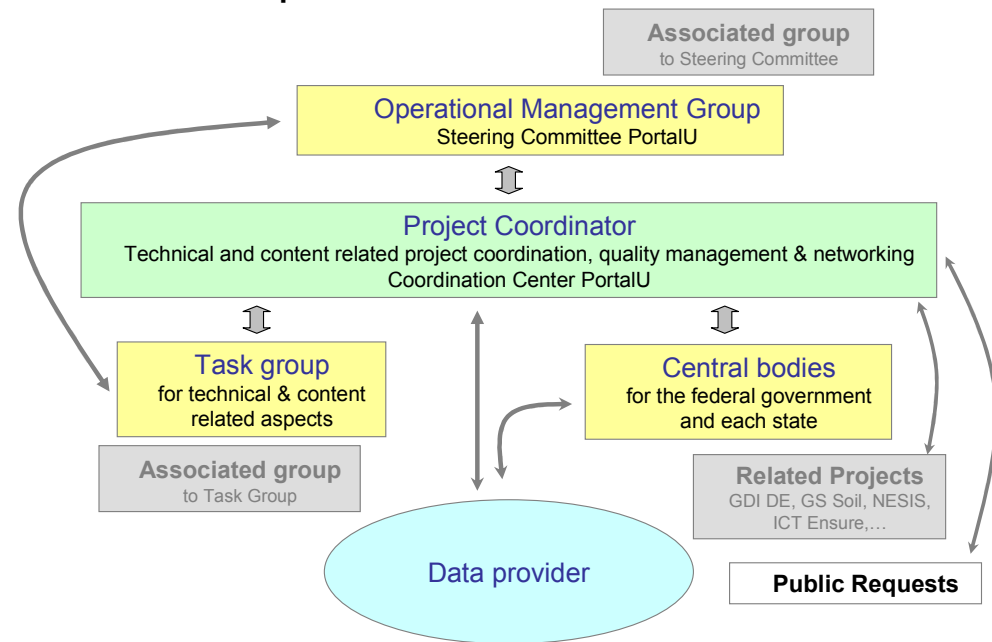
- Coordination center: 5 permanent staff members
- Project partners: representatives from environmental administration: federal & 16 state ministries and subordinated agencies & institutions
- Institutions and organization, who provide public environmental information





Workflow example: Technical development

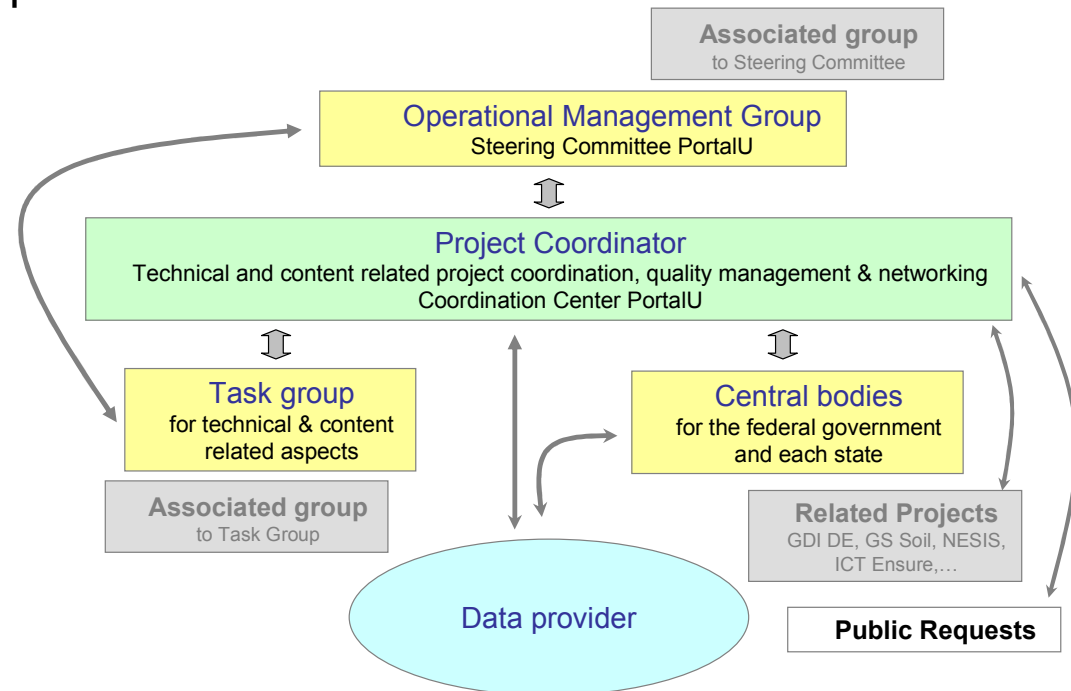
- Task group member announces development needs to coordinator
- Coordinator discusses requests / possible solutions with task group
- Task group gives recommendation
- OMG discusses request & recommendation & decides
- Coordinator is responsible for technical implementation





Workflow example: Content related request from citizens

- Public request are addressed to the coordinator
- Coordinator sends request to the responsible central body
- Central body transfers request to responsible department
- Department answers request



- Organizational structure prove one's worth (exist since 2005)
- Transparent decision procedure
- Federal state exchange platform for environment questions

Current state: provided information in PortalU

- Number of information providers: > 450
- About 3 Mio. environmental web pages
- About 500.000 entries from almost 30 data bases

⇒ Example for successful co-operation between federal government and states

- Experiences are used to manage EU-funded project GS Soil
- GS Soil Presentation on Friday, June 25, 11:40 h, room: Aula Mala

